

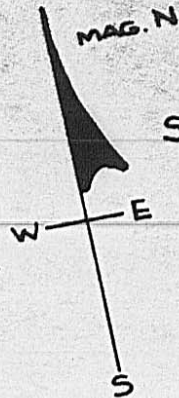
PLAT SHOWING SURVEY OF TWO PARCELS OUT OF
 ROY B. WELLS, SR. AND INA M. WELLS' 204.995
 ACRES AS REFERENCED IN DEED BOOK 178, PG. 253

MADISON COUNTY, OHIO

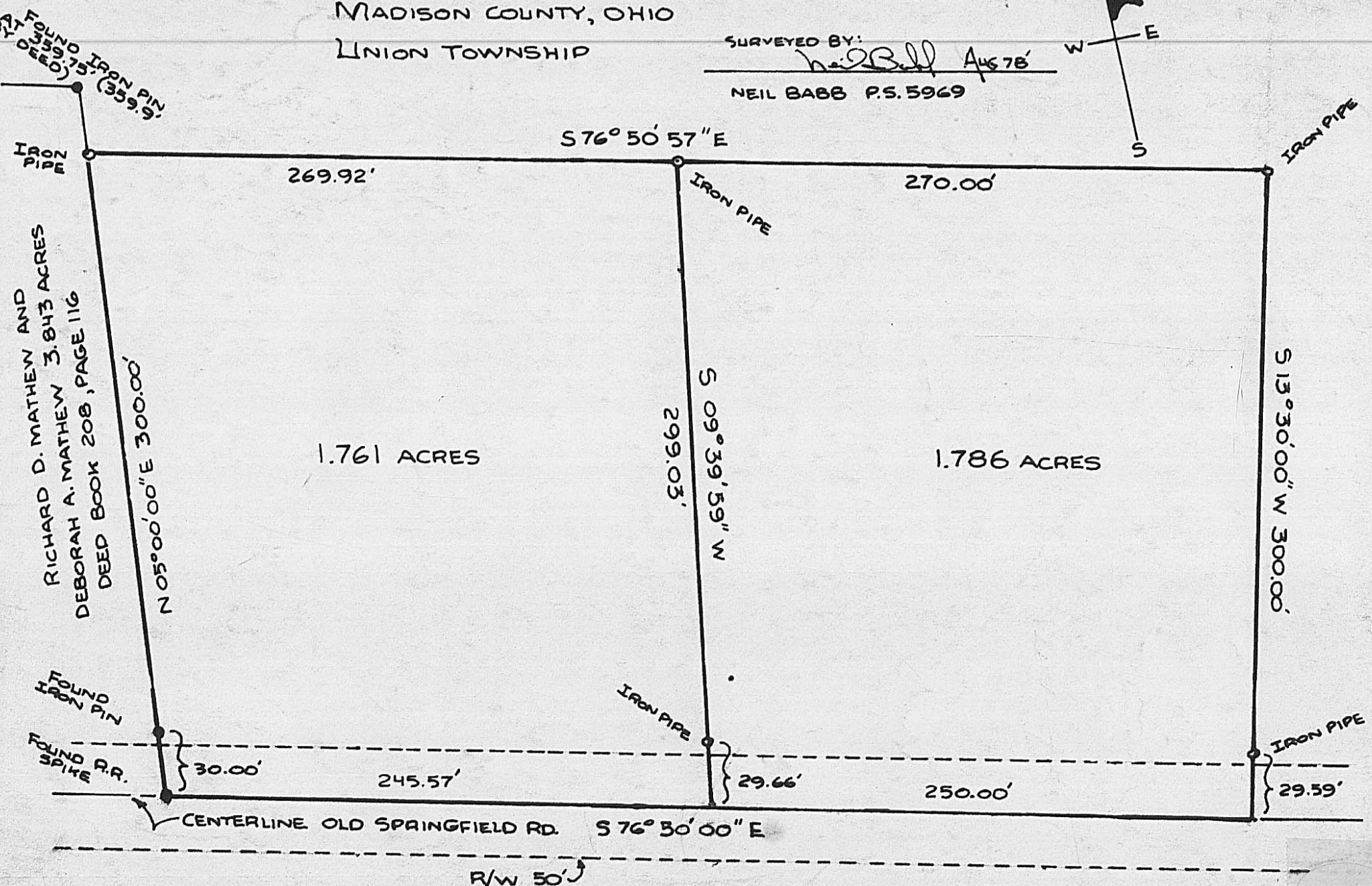
UNION TOWNSHIP

SURVEYED BY:

NEIL BABB P.S. 5969



SCALE: 1 INCH = 60 FT



RICHARD D. MATHEW AND
 DEBORAH A. MATHEW 3.843 ACRES
 DEED BOOK 208, PAGE 116