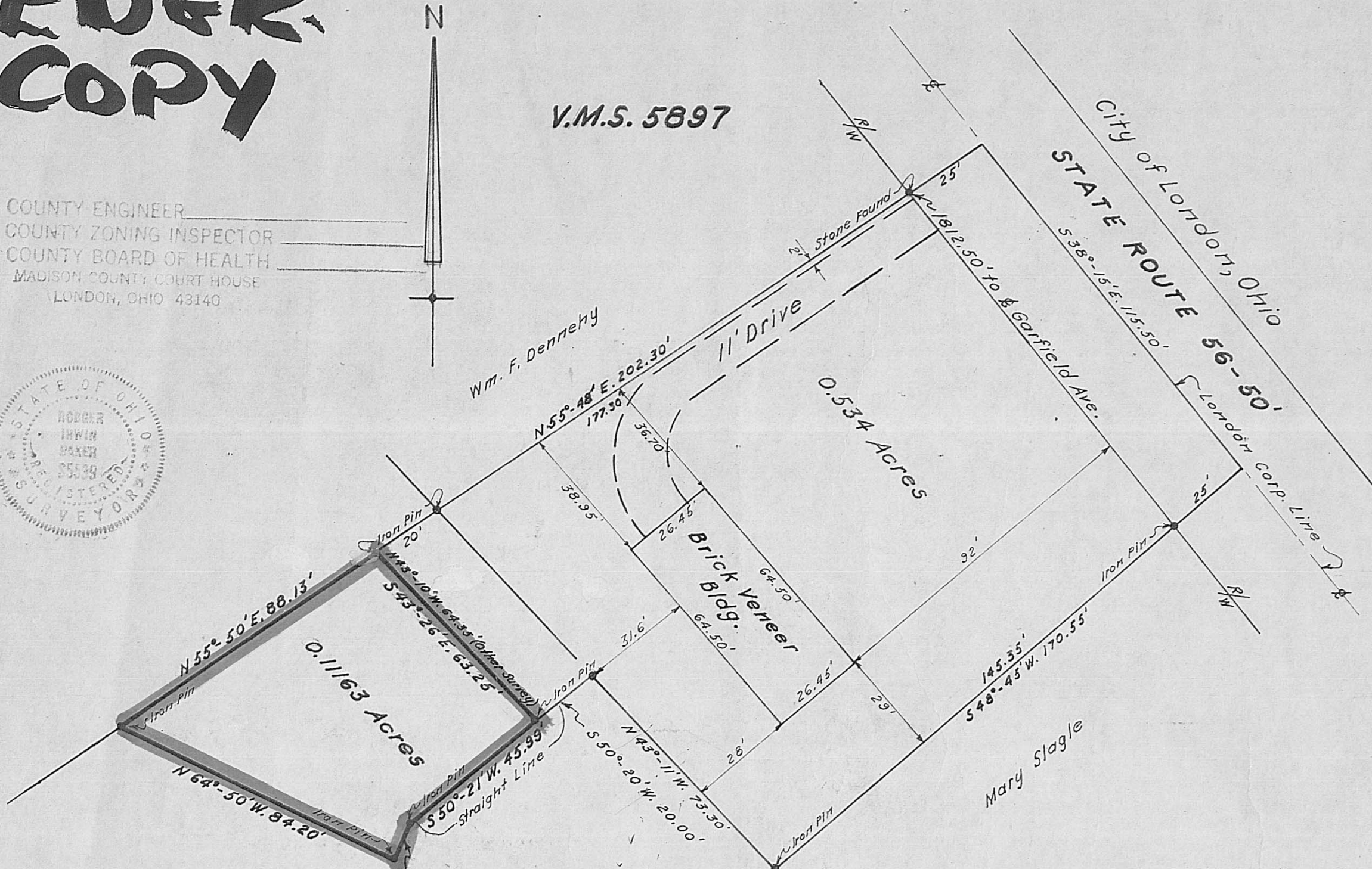
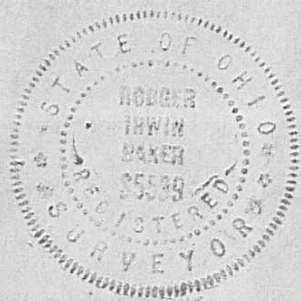


EXERCISE COPY

V.M.S. 5897

COUNTY ENGINEER _____
COUNTY ZONING INSPECTOR _____
COUNTY BOARD OF HEALTH _____
MADISON COUNTY COURT HOUSE
LONDON, OHIO 43140



Surveyed for Mary Slagle - 1964
**Parcel of land in Union Township,
Madison County, Ohio, surveyed for
Joe Slagle - 1970**

Scale: 1" = 30'

Rodger Irwin Baker
Rodger Irwin Baker
Reg. Surveyor S-05539