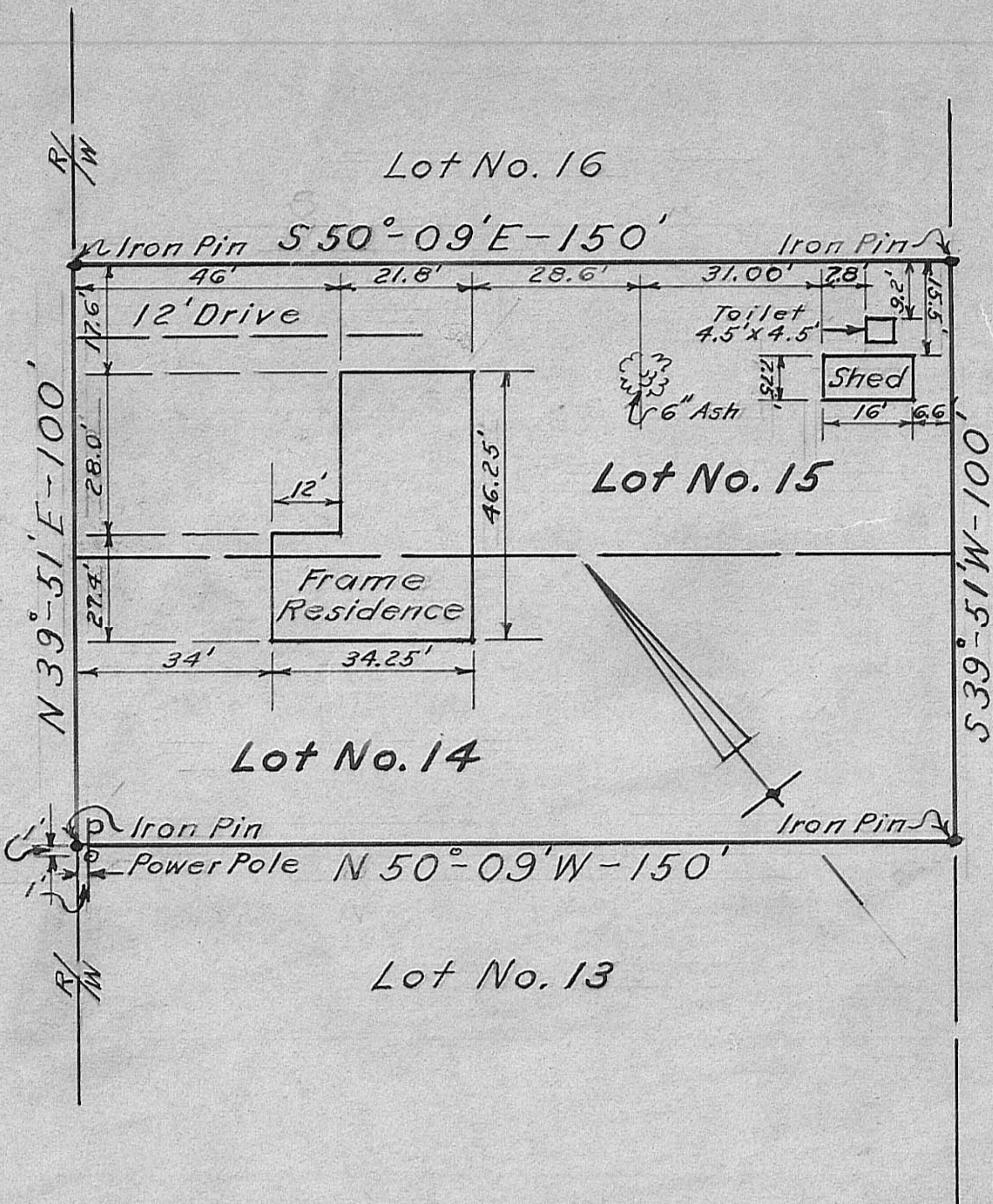


LAKEVIEW LANE - 40'



**Lots No.'s 14 & 15 of
Speasmakers 1st. Addition, Madison Lake,
Union Township, Madison County, Ohio,
surveyed for John Gillette.-1962**

I certify all dimensions on the above plat are correct. Iron Pins were set as shown and no encroachments were found. - Date: 9-21-62

Scale: 1" = 30'

Halger Kordahl
Registered Engineer No. 5851